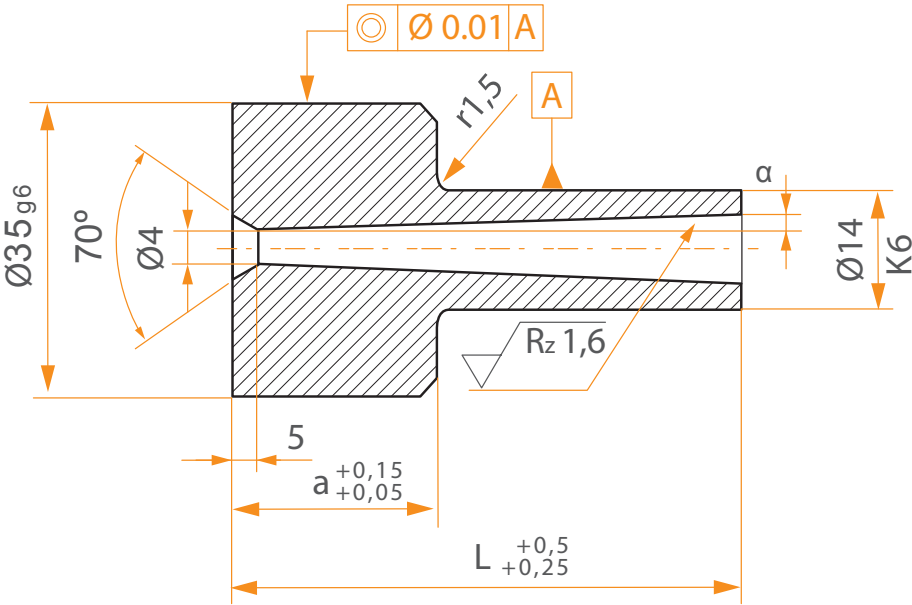


Material	Aceros de cementación
Material	Case hardening steel
Tratamiento	B1: Sin Templar / Templado
Treatment	B1: Non hardened / B1T: Hardened
Dureza	B1: 21-23 Hrc / B1T: 58 - 60 Hrc
Hardness	B1: 21-23 Hrc / B1T: 58 - 60 Hrc
Forma de pedido	Bebedero B1 o B1T / a x L x α
Order form	Sprue Bush B1 or B1T / a x L x α

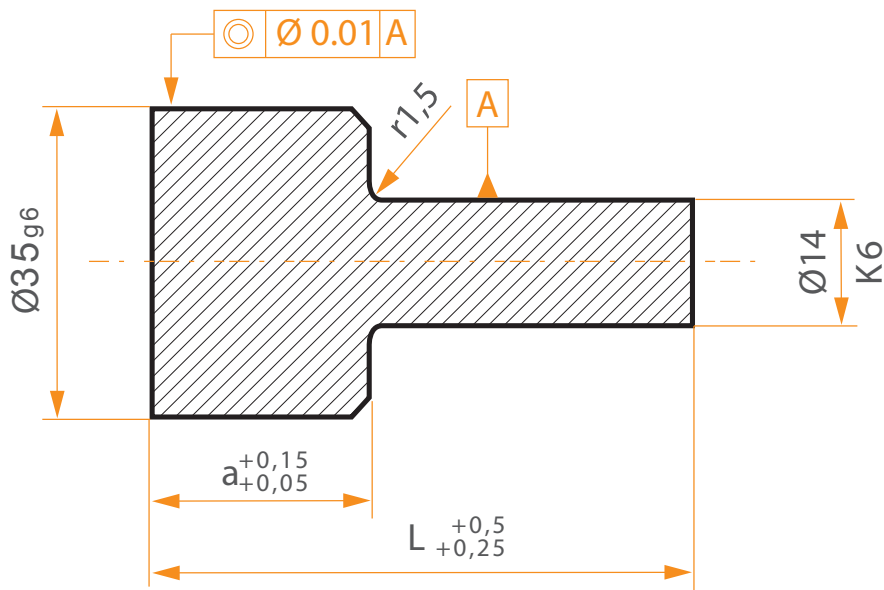
B1 - B1T



a	L						
	$\alpha=2^\circ$						$\alpha=1^\circ$
	27	36	46	51	60	70	70
12							
24							

Material	Aceros de cementación
Material	Case hardening
Tratamiento	B1: Sin Templar
Treatment	B1: Non hardened
Dureza	21 - 23 Hrc
Hardness	21 - 23 Hrc
Forma de pedido	Bebedero B2 / a x L
Order form	Sprue Bush B2 / a x L

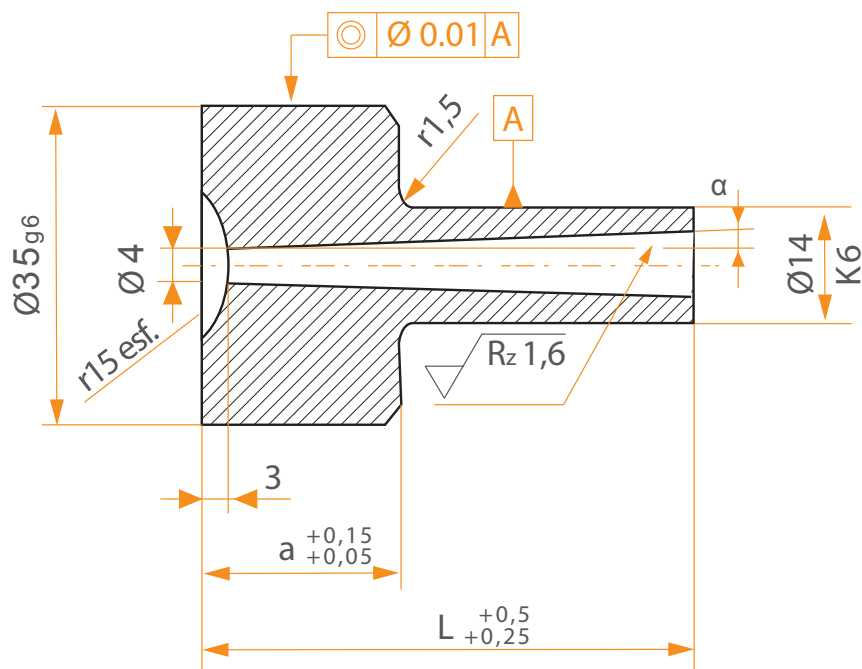
B2



a	L						
	27	36	46	51	60	70	100
12							
24							

Material	Aceros de cementación
Material	Case hardening steel
Tratamiento	B3: Sin Templar / B3T: Templado
Treatment	B3: Non hardened / B3T: Hardened
Dureza	B3: 21 - 23 Hrc / B3T: 58 - 60 Hrc
Hardness	B3: 21 -23 Hrc / B3T: 58 - 60 Hrc
Forma de pedido	Bebedero B3 o B3T / a x L
Order form	Sprue Bush B3 or B3T / a x L

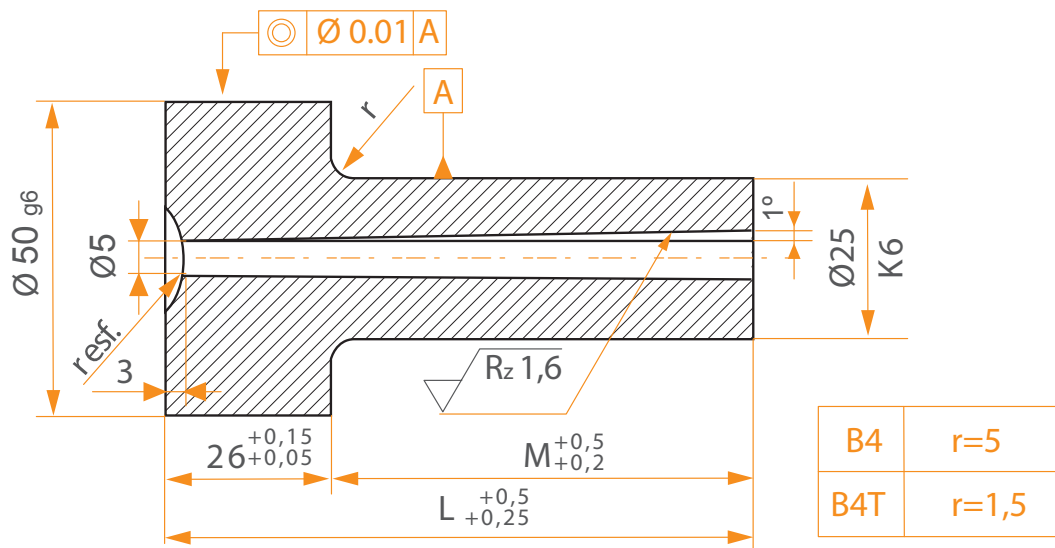
B3 - B3T



a	L							
	α=2°						α=1°	
	27	36	46	51	60	70	70	100
12								
24								

Material	Aceros de cementación
Material	Case hardening
Tratamiento	B4: Sin Templar / B4T: Templado
Treatment	B4: Non hardened / B4T: Hardened
Dureza	B4: 21 - 23 Hrc / B4T: 58 - 60 Hrc
Hardness	B4: 21 -23 Hrc / B4T: 58 - 60 Hrc
Forma de pedido	Bebedero B4 o B4T / L x r esf
Order form	Sprue Bush B4 or B4T / L x r esf

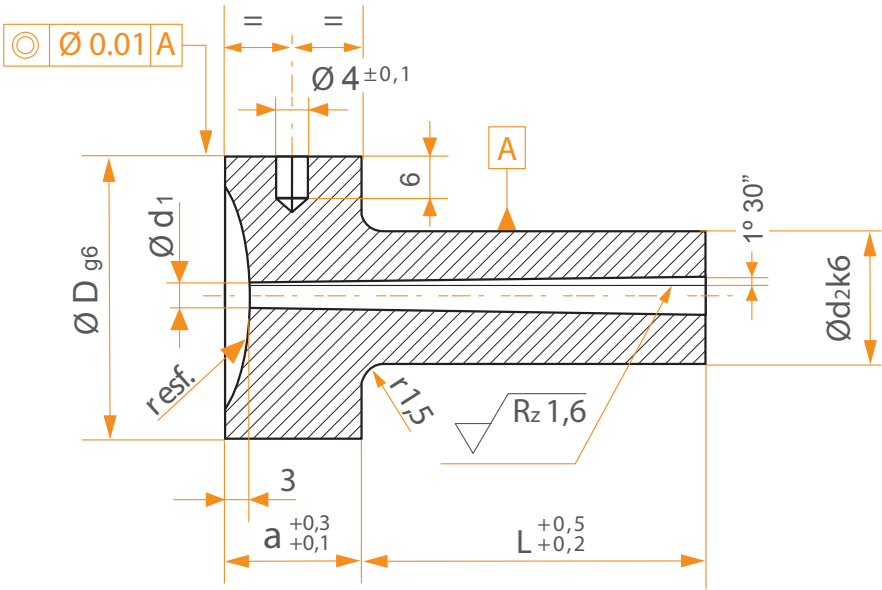
B4 - B4T



M	26,5	36,5	46,5	56,5	66,5	76,5	86,5	96,5	106,5	116,5	126,5	136,5	156,5
L	52,5	62,5	72,5	82,5	92,5	102,5	112,5	122,5	132,5	142,5	152,5	162,5	182,5
r esf 15 - 15,5 - 19 - 40													

Material	Aceros de cementación
Material	Case hardening steel
Tratamiento	Templado
Treatment	Hardened
Dureza	58 - 60 Hrc
Hardness	58 - 60 Hrc
Forma de pedido	Bebedero B5 / D x d1 x L x R
Order form	Sprue Bush B5 / D x d1 x L x R

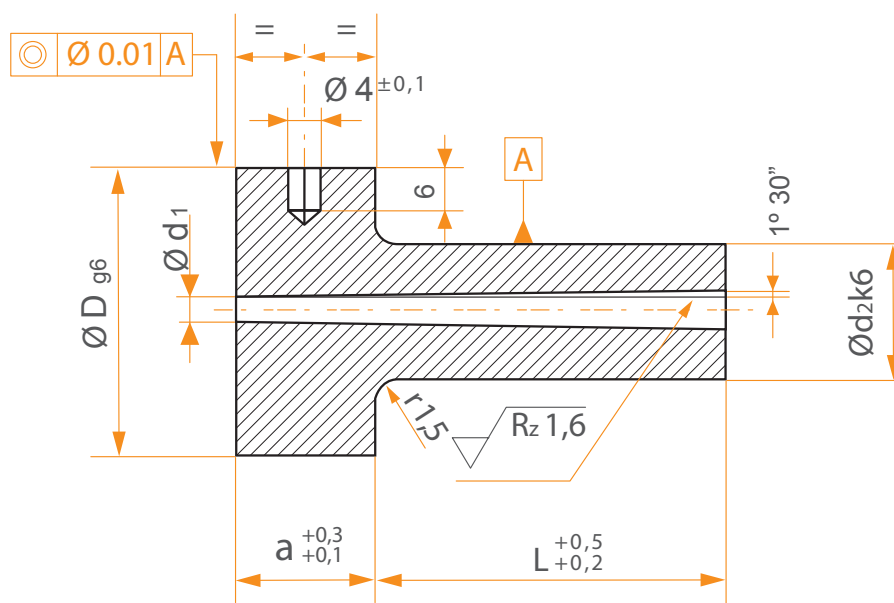
B5



D	a	d2	r. esf.	d1	L				
					27	36	46	56	76
38	18	18	15,5 40	3,5					
				4,5					
48	23	24		4,5					
				6,5					

<b>Material</b>	Aceros de cementación
<b>Material</b>	Case hardening
<b>Tratamiento</b>	Templado
<b>Treatment</b>	Hardened
<b>Dureza</b>	58 - 60 Hrc
<b>Hardness</b>	58 - 60 Hrc
<b>Forma de pedido</b>	Bebedero B6 / D x d1 x L
<b>Order form</b>	Sprue Bush B6 / D x d1 x L

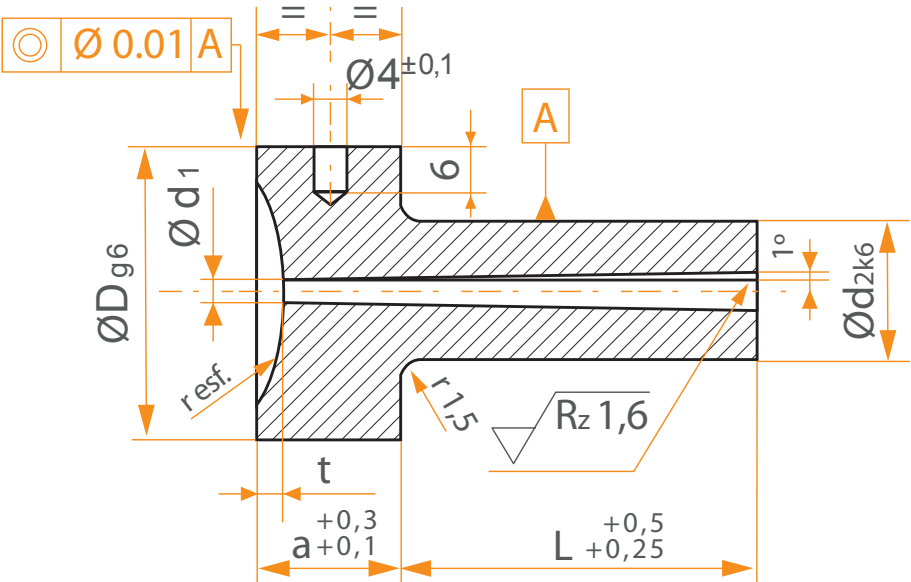
B6



D	a	d2	d1	L				
				27	36	46	56	76
38	18	18	3,5					
			4,5					
48	23	24	4,5					
			6,5					

Material	Aceros de cementación
Material	Case hardening steel
Tratamiento	Templado
Treatment	Hardened
Dureza	58 - 60 Hrc
Hardness	58 - 60 Hrc
Forma de pedido	Bebedero B7 / D x d1 x L x R
Order form	Sprue Bush B7 / D x d1 x L x R

B7



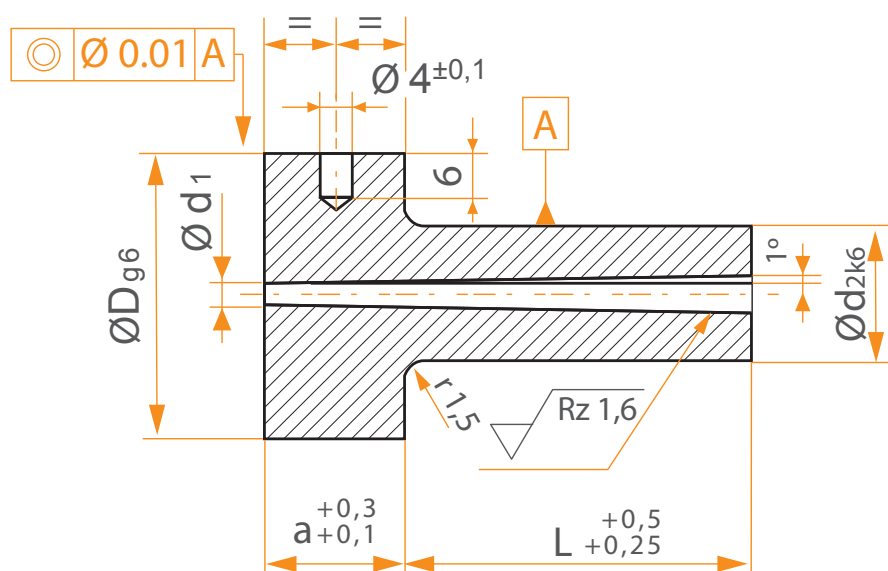
D	a	d2	r. esf.	t	d1	L							
						22	27	36	46	56	76	96	116
28	13	12	15,5 40	1,5	2,5								
					3,5								
38	18	18		3	3								
					4								



46

Material	Aceros de cementación
Material	Case hardening
Tratamiento	Templado
Treatment	Hardened
Dureza	58 - 60 Hrc
Hardness	58 - 60 Hrc
Forma de pedido	Bebedero B8 / D x d1 x L
Order form	Sprue Bush B8 / D x d1 x L

B8

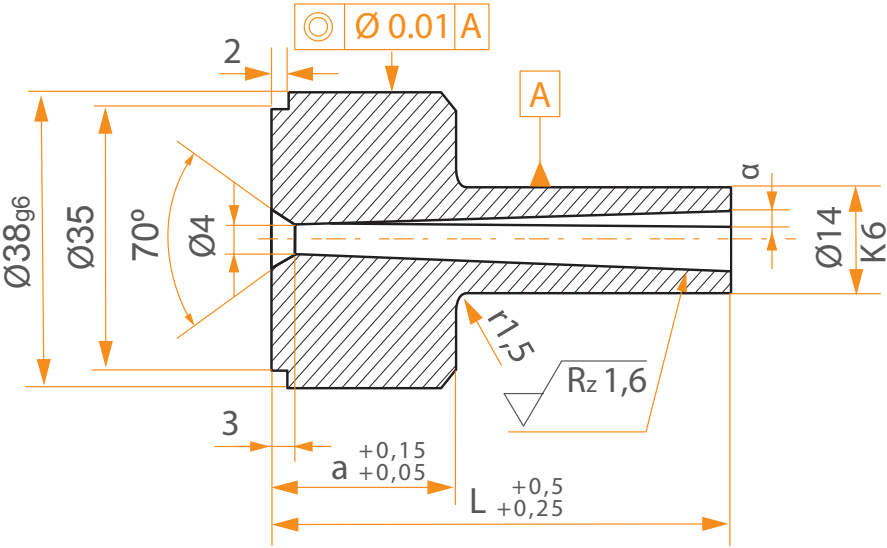


D	a	d2	t	d1	L							
					22	27	36	46	56	76	96	116
28	13	12	1,5	2,5								
				3,5								
38	18	18	3	3								
				4								



Material	Aceros de cementación
Material	Case hardening steel
Tratamiento	B11: Sin Templar / B11T: Templado
Treatment	B11: Non hardened / B11T: Hardened
Dureza	B11: 21 - 23 Hrc / B11T: 58 - 60 Hrc
Hardness	B11: 21 - 23 Hrc / B11T: 58 - 60 Hrc
Forma de pedido	Bebedero B11 o B11T / a x L
Order form	Sprue Bush B11 or B11T / a x L

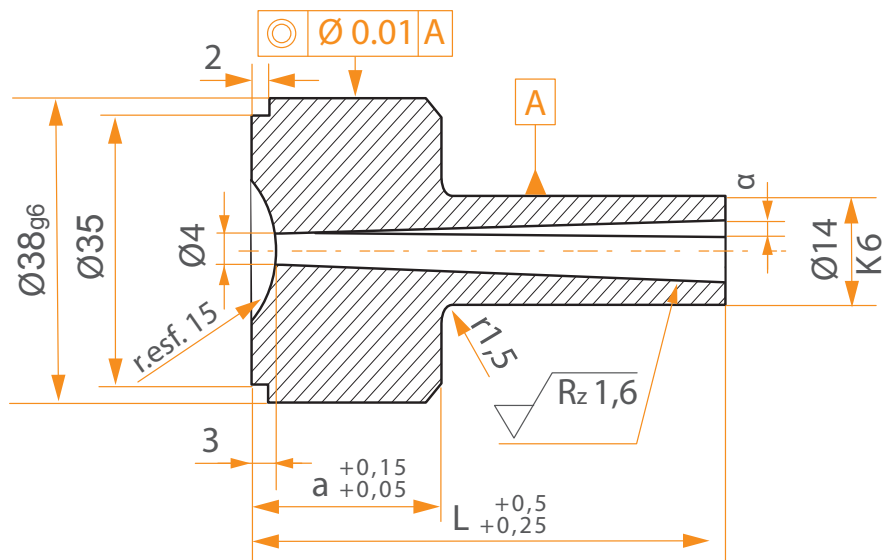
B11 - B11T



a	L							
	$\alpha=2^\circ$						$\alpha=1^\circ$	
	29	38	48	51	60	70	70	100
12								
24								

Material	Aceros de cementación
Material	Case hardening
Tratamiento	B31: Sin Templar / B31T: Templado
Treatment	B31: Non hardened / B31T: Hardened
Dureza	B31: 21 - 23 Hrc / B31T: 58 - 60 Hrc
Hardness	B31: 21 - 23 Hrc / B31T: 58 - 60 Hrc
Forma de pedido	Bebedero B31 o B31T / L x r esf
Order form	Sprue Bush B31 or B31T / L x r esf

B31 - B31T



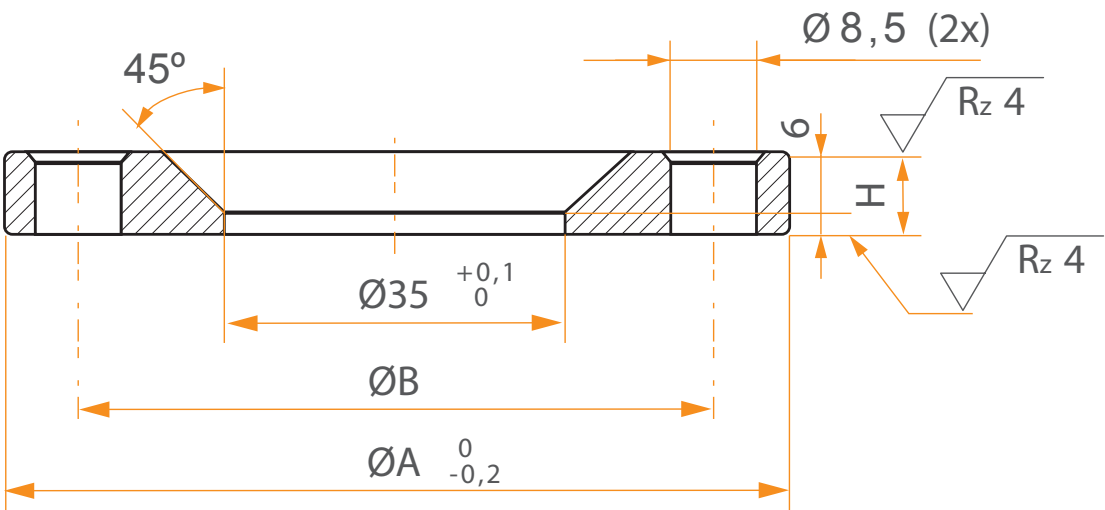
a	L							
	$\alpha=2^\circ$						$\alpha=1^\circ$	
	29	38	48	51	60	70	70	100
12								
24								

DISCO CENTRADOR / LOCATING RING

DC

Material	Aceros de construcción
Material	Structural steel
Forma de pedido	Disco centrador DC / A x H
Order form	Locating Ring DC / A x H

DC

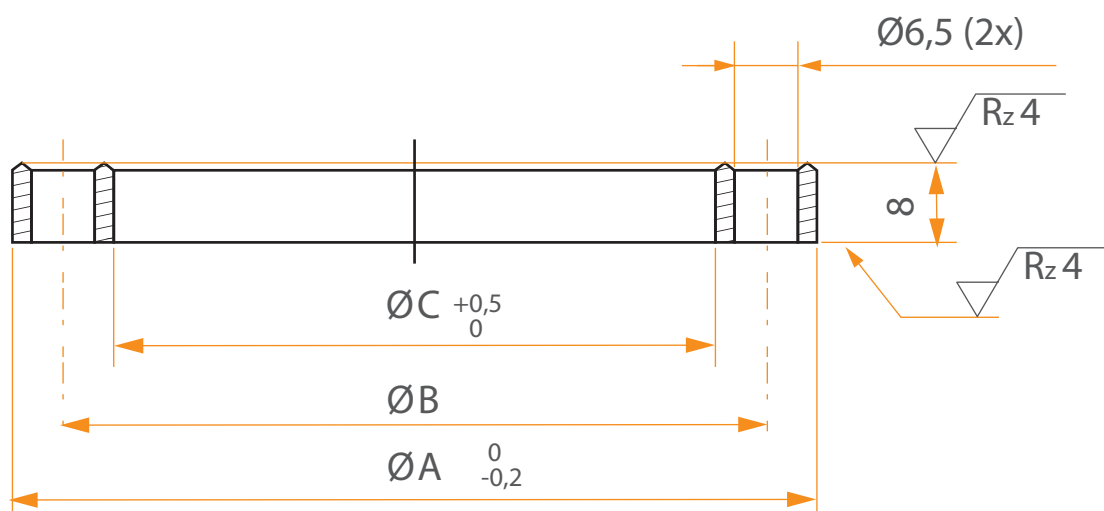


A	70	75	80	90	100	110	150	160	175	200
B	59	61	65	70	75	80	118	118	130	142
M	8 or 12									

50

Material	Aceros de construcción
Material	Structural steel
Forma de pedido	Disco centrador DC0 / A
Order form	Locating Ring DC0 / A

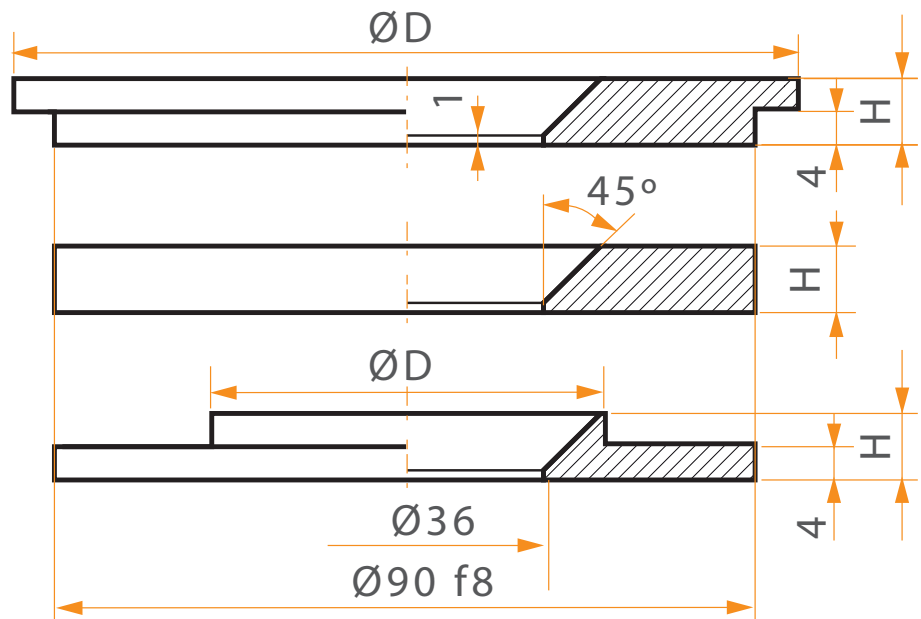
DC0



A	80	90	100	110	120	125	130
B	70	77,5	85	95	105	110	115
C	60	65	70	80	90	95	100

Material	Aceros de construcción
Material	Structural steel
Forma de pedido	Disco centrador DC1 / D x H
Order form	Locating Ring DC1 / D x H

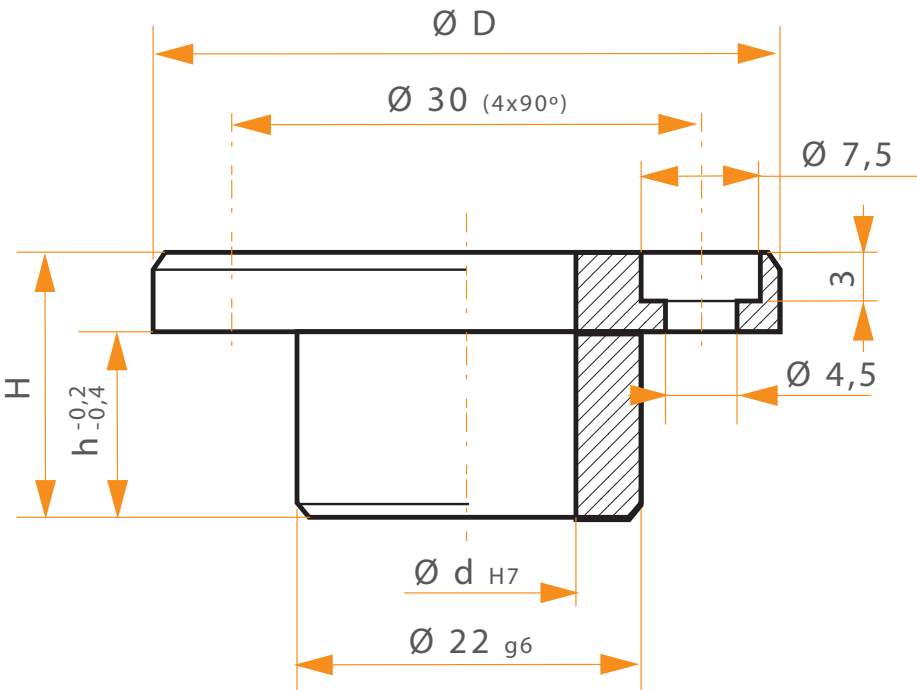
DC1



D	60	80	90	100	110	110	120	125	130	140	150	160	175	180	200	250
H	8	8	8	8	8	12	12	12	12	12	12	12	12	12	12	12

Material	Aceros de construcción
Material	Structural steel
Forma de pedido	Disco centrador DC2 / D x H/d
Order form	Locating Ring DC2 / D x H/d

DC2



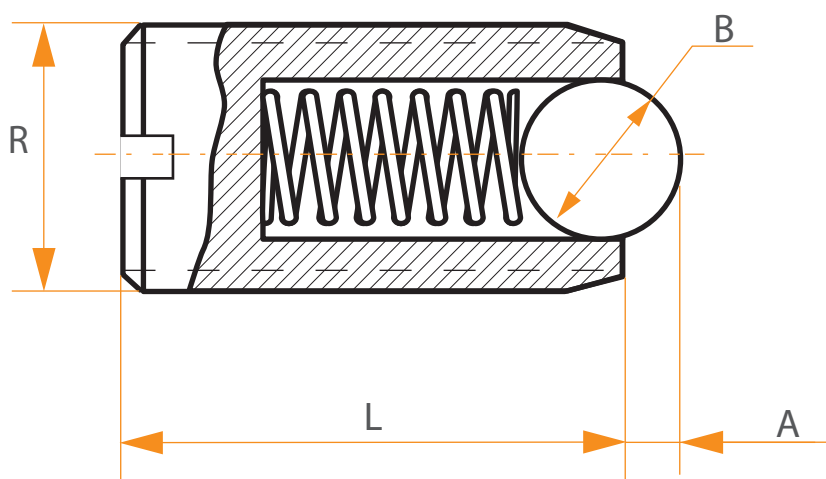
D	40	40	40	40	60	60
H	17	17	22	22	17	22
d	10	14	10	14	14	14
h	12	12	17	17	12	17

PB

POSICIONADOR BOLA PB  
BALL PLUNGER PB

Material	Acero C45
Material	Steel C45
Forma de pedido	Posionador Bola / PB
Order form	Ball Plunger / PB

PB



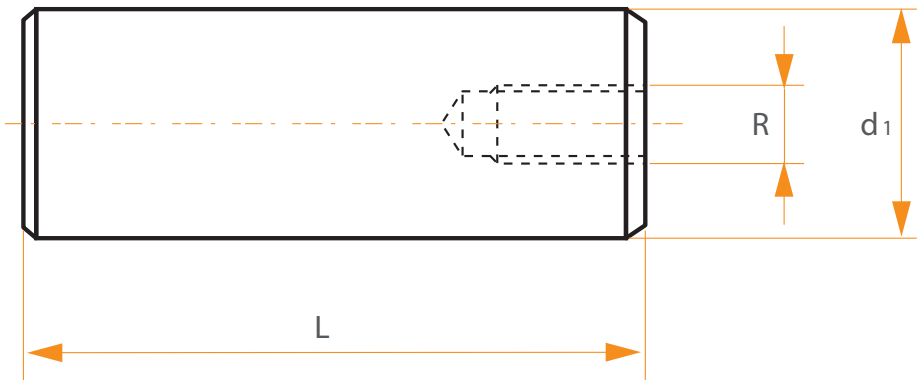
R	B	L	A
M.3	1,5	7	0,4
M.4	2,5	9	0,8
M,5	3	12	0,9
M,6	3,5	14	1
M.8	4,5	16	1,5
M,10	6	19	2
M,12	8	22	2,5
M,16	10	24	3,5
M,20	12	30	4,5
M,24	15	34	5,5

COLUMNA APOYO CA  
SUPPORT PILLAR CA

CA

Material	Acero 1.7264
Material	Steel 1.7264
Tratamiento	Cementado (profun. 0,8 mm)
Treatment	Case hardened (depth 0,8 mm)
Dureza	60 - 62 Hrc
Hardness	60 - 62 Hrc
Forma de pedido	Columna Apoyo / CA
Order form	Support pillar / CA

CA

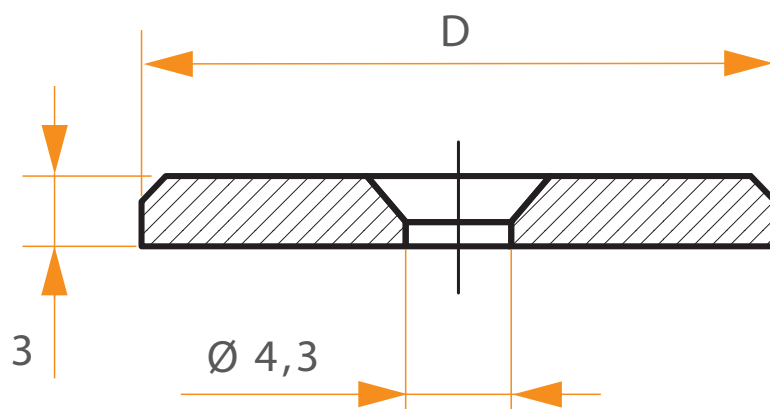


d <sub>1</sub>	R	L								
		50	60	70	80	90	100	110	120	150
30	M-10									
40	M-10									
50	M-10									
60	M-12									
80	M-12									
100	M-16									



Material	Acero 1.7264
Material	Steel 1.7264
Tratamiento	Cementado (profun. 0,8 mm)
Treatment	Case hardened (depth 0,8 mm)
Dureza	56 - 60 Hrc
Hardness	56 - 60 Hrc
Forma de pedido	Tope Placa TPS / D
Order form	Stop for ejection plate TPS / D

TPS



D

18

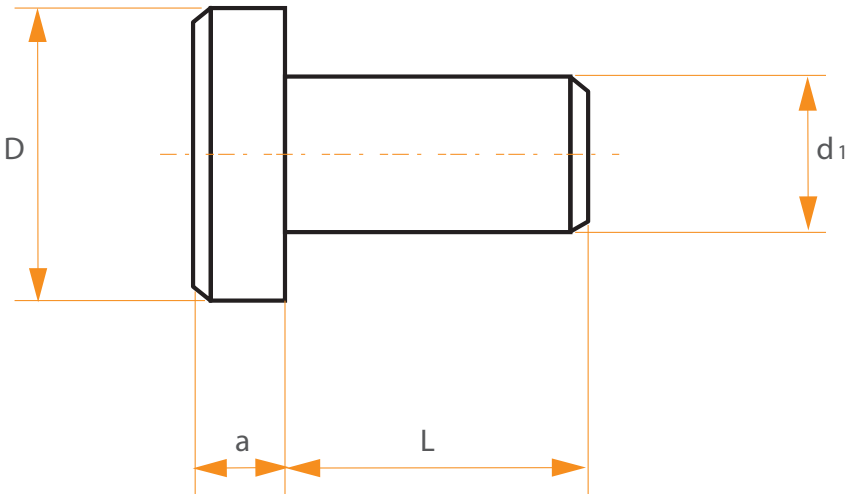
28

TOPE PLACA TPE  
STOP FOR EJECTION PLATE TPE

TPE

Material	Acero 1.7264
Material	Steel 1.7264
Tratamiento	Cementado (profun. 0,8 mm)
Treatment	Case hardened (depth 0,8 mm)
Dureza	56 - 60 Hrc
Hardness	56 - 60 Hrc
Forma de pedido	Tope Placa TPE / D
Order form	Stop for ejection plate TPE / D

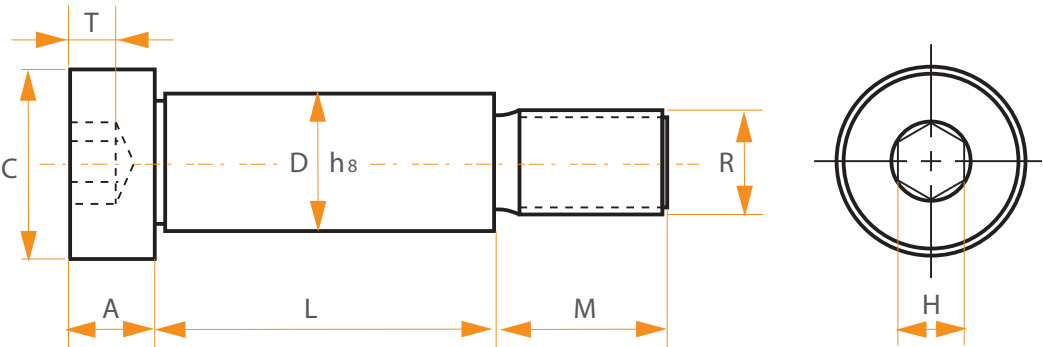
TPE



D	L	C	A
8	20	15	4,5
10	10	20	5

Material	Acero 1.7264
Material	Steel 1.7264
Tratamiento	Cementado (profun. 0,8 mm)
Treatment	Case hardened (depth 0,8 mm)
Dureza	46 - 48 Hrc
Hardness	46 - 48 Hrc
Forma de pedido	Tope Guia TGM / D x L
Order form	Guide Stop TGM / D x L

TGM



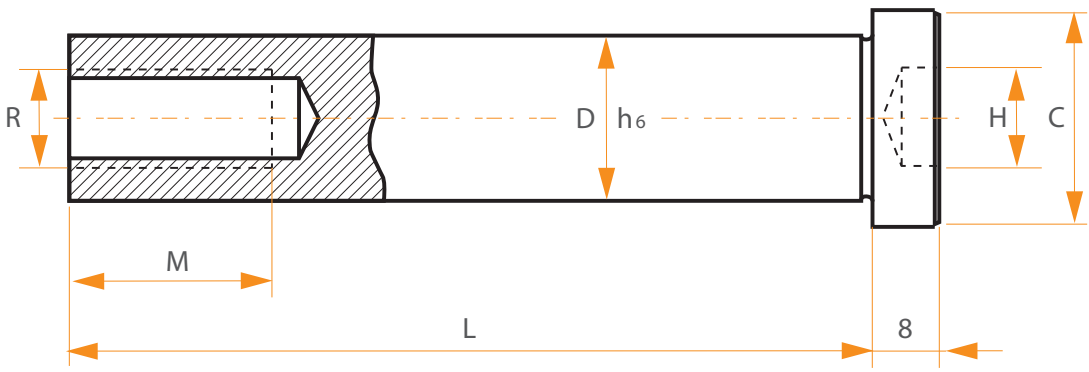
D	C	H	M	R	L										
					40	50	60	80	100	125	150	175	200	225	250
14	20	8	12	M.10											
20	26	10	15	M.14											

TOPE GUIA HEMBRA TGH  
GUIDE STOP TGH

TGH

Material	Acero 1.7264
Material	Steel 1.7264
Tratamiento	Cementado (profun. 0,8 mm)
Treatment	Case hardened (depth 0,8 mm)
Dureza	46 - 48 Hrc
Hardness	46 - 48 Hrc
Forma de pedido	Tope Guia TGH / D x L
Order form	Guide Stop TGH / D x L

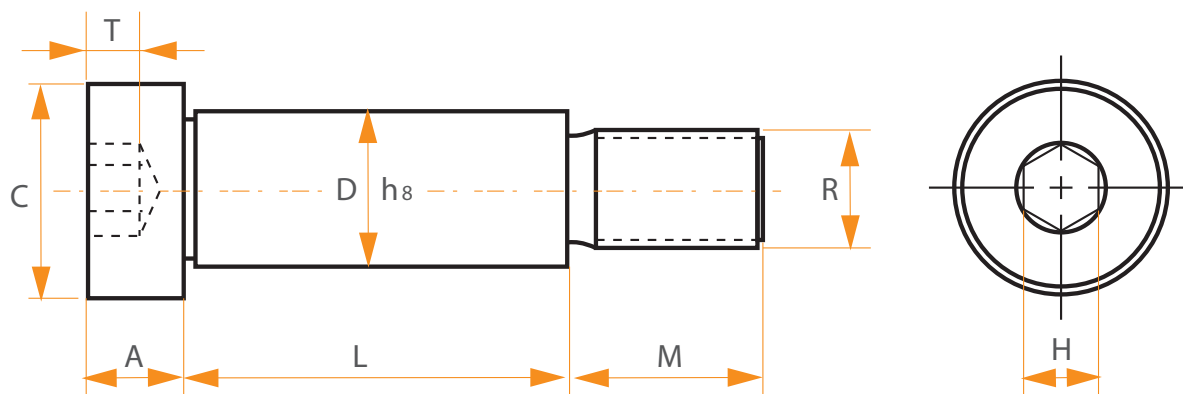
TGH



D	C	H	M	R	L								
					40	50	60	80	100	125	150	175	200
14	20	8	18	M.8									
20	26	10	25	M.12									

Material	Acero aleado Cr-Ni-Mo
Material	Special alloyed steel Cr-Ni-Mo
Dureza	120 - 140 Kp/mm <sup>2</sup>
Hardness	120 - 140 Kp/mm <sup>2</sup>
Forma de pedido	Tornillo Limite TLM / D x R x L
Order form	Shoulder bolt TLM / D x R x L

## TLM

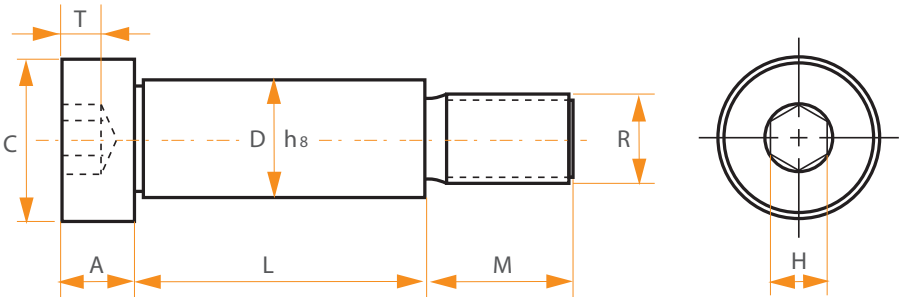


R	M.5	M.6	M.8	M.10	M.12	M.16	M.20	M.24
C	9	11	14	18	22	28	36	45
D	6	8	10	12	16	20	25	32
A	4	5	6	8	10	12	16	20
M	8	10	12	16	20	25	32	40
H	3	4	5	6	8	10	14	17
T	2.5	3	4	5	6	8	11	12

TORNILLO LIMITE TLM  
SHOULDER BOLT TLM

TLM

TLM



L

6								
8								
10								
12								
14								
16								
20								
25								
30								
32								
40								
50								
60								
63								
70								
80								
90								
100								
110								
120								
125								
140								
160								
200								
250								